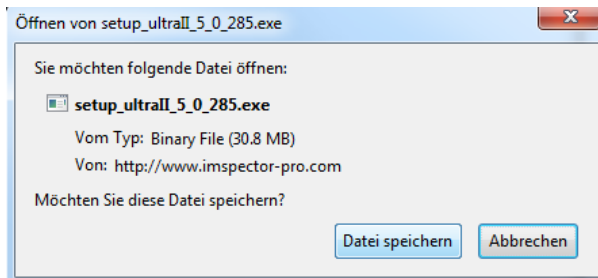


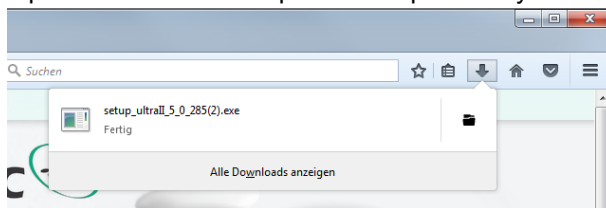
Software Update ImSpector 285 Installation Guide

How to install ImSpector

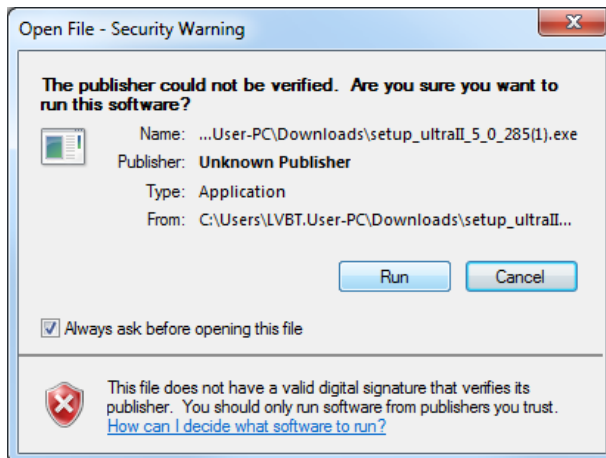
1. Close all current ImSpector software
2. Click on the provided link http://www.imspector-pro.com/software/setup_ultraII_5_0_285.exe
3. Click on “Save file”



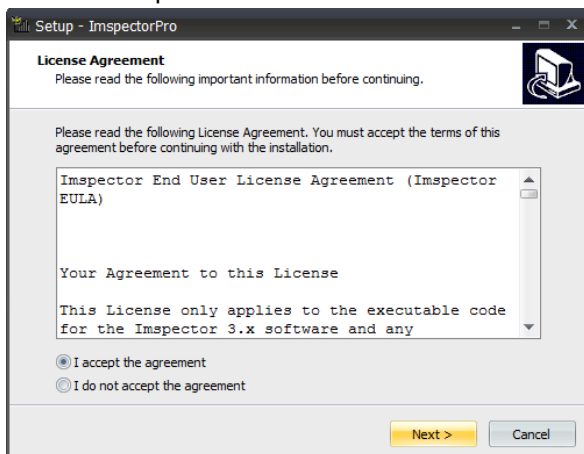
4. Open downloaded ImSpector setup file via your browser download directory



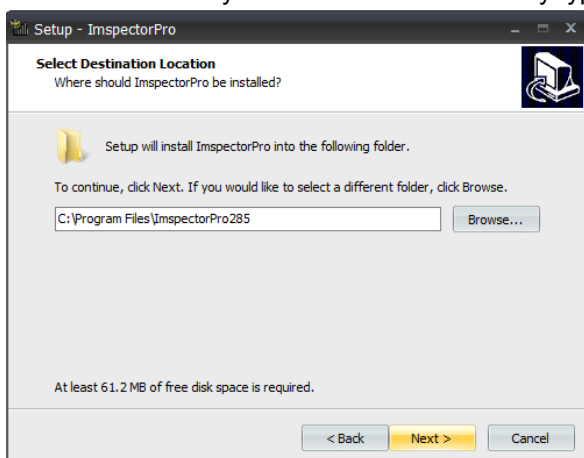
5. Click on “Run”



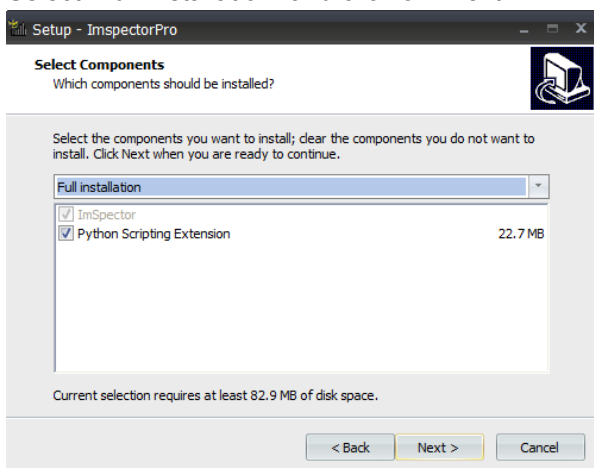
6. Check “accept” and click on “Next”



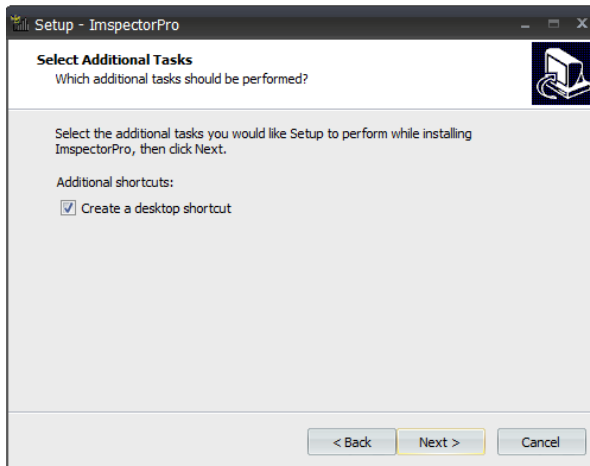
7. Select the directory for installation or manually type C:\Program Files\InspectorPro285



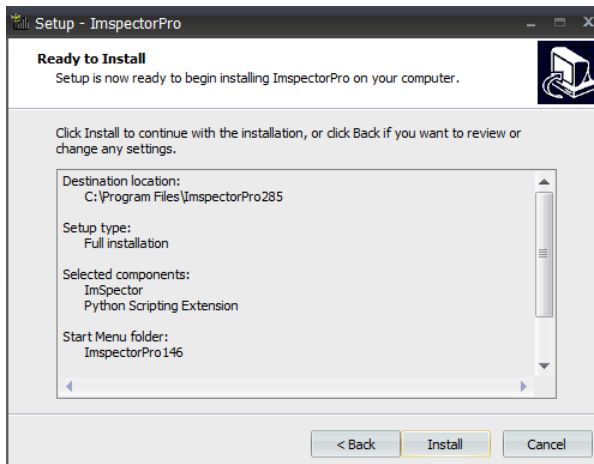
8. Select “Full installation” and click on “Next”



9. Select “Create a desktop shortcut” and click on “Next”



10. Click on “Install”



11. Click on “Finish” to start ImSpector



Systems equipped with an Andor camera

In case your UltraMicroscope is equipped with an Andor camera (Neo/Zyla) please follow additional instructions:

Copy the dlls below for the camera from the directory C:\program files\Andor SDK3 into the new ImSpector runtime directory (C:\Program Files\ImSpectorPro285).

The dlls (and one lib) are:

- atblkbx.dll
- atcl_bitflow.dll
- atcore.dll
- atdevregcam.dll
- atusb_libusb.dll
- atusb_libusb10.dll
- atutility.dll
- atcorem.lib