

Software Update ImSpector for UM I

New software features for UM I

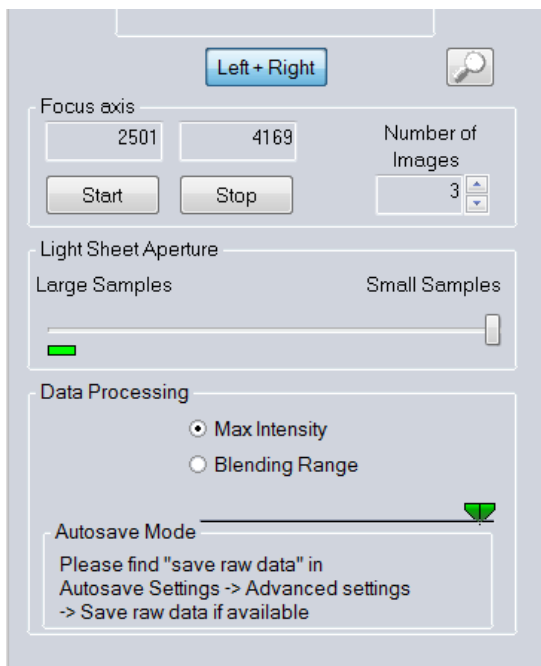
1. Modified left and right light sheet data processing
2. Dynamic focus raw data processing via Image Series Viewer
3. Imaris export via Image Series Viewer

1. Modified left and right light sheet data processing

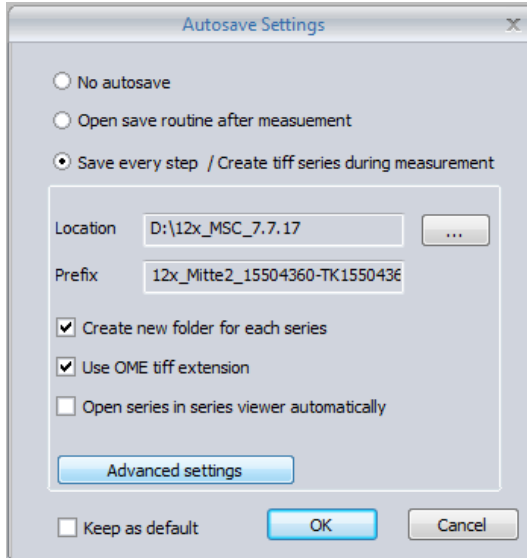
The new ImSpector version directly processes data of the left and right light sheet via a chosen algorithm. “Blending Range” or “Max Intensity” can be selected in the “Ultra” dialogue. Saving also raw data can be activated via “Autosave Settings”.

How to use the new light sheet processing mode

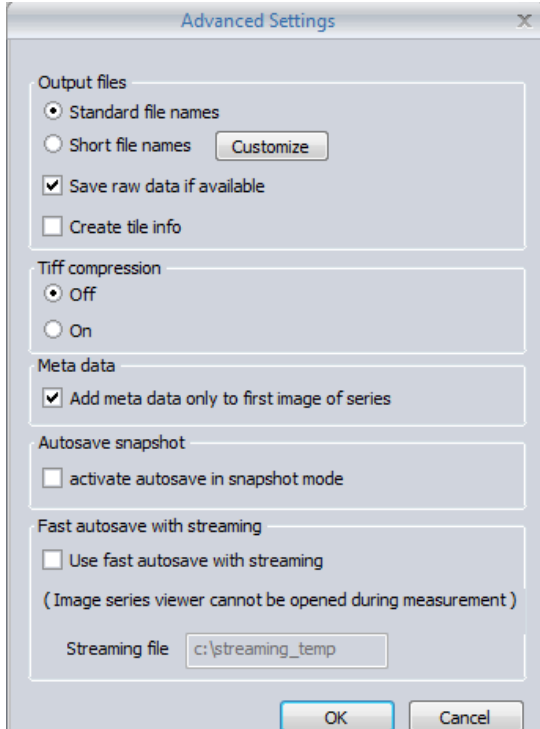
- Go to “Data Processing” and select “Max Intensity” or “Blending Range”



- Now just merged image data are saved
- In case that also raw data should be saved please go to “Autosave Settings”
- Click in “Autosave Settings” on “Advanced settings”



- Activate in “Advanced Settings” the option “Save raw data if available”



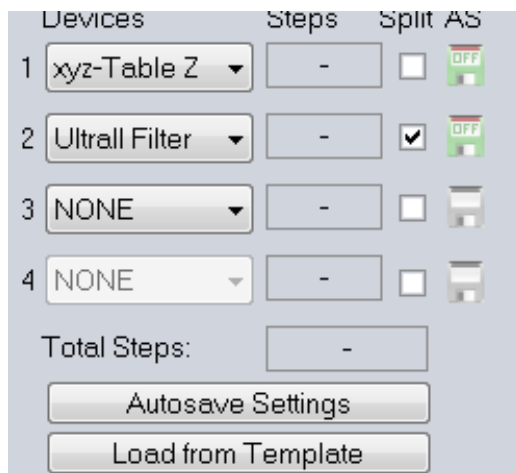
- Confirm with clicking “OK”

2. Dynamic focus raw data processing via Image Series Viewer

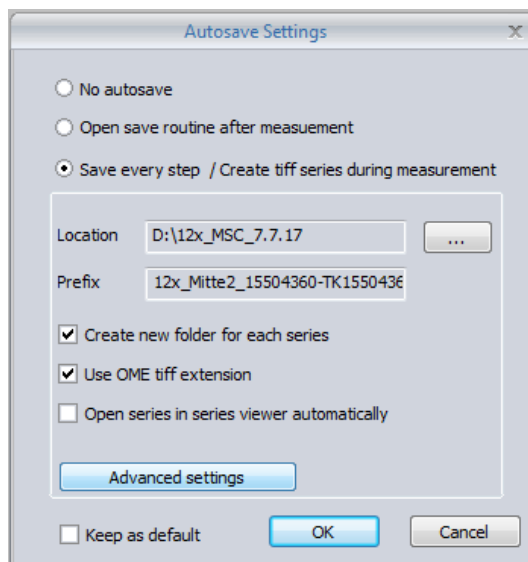
Using the dynamic focus processing of raw data via Image Series Viewer requires a workstation with enough memory. This mode of operation enlarges the total amount of data by factor of X with X as number of images per Z plane. The raw data of each Z plane are saved and processed after data acquisition using the contrast algorithm.

How to use dynamic raw data processing via Image Series Viewer

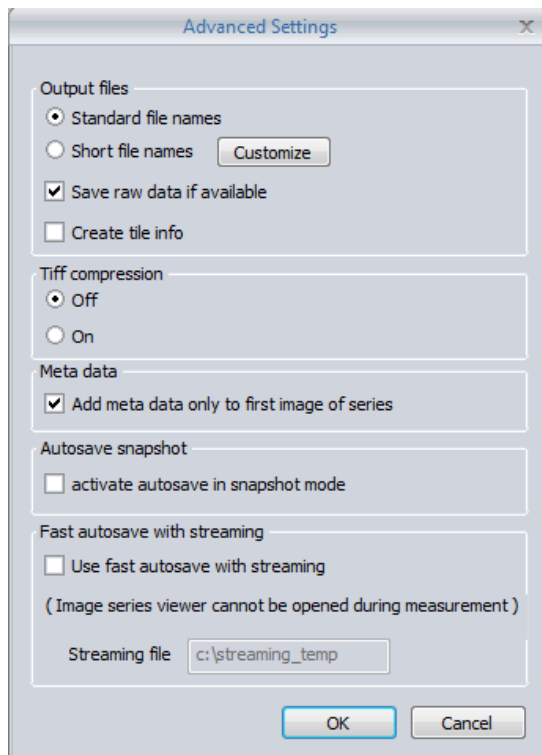
- Click on “Autosave Settings”



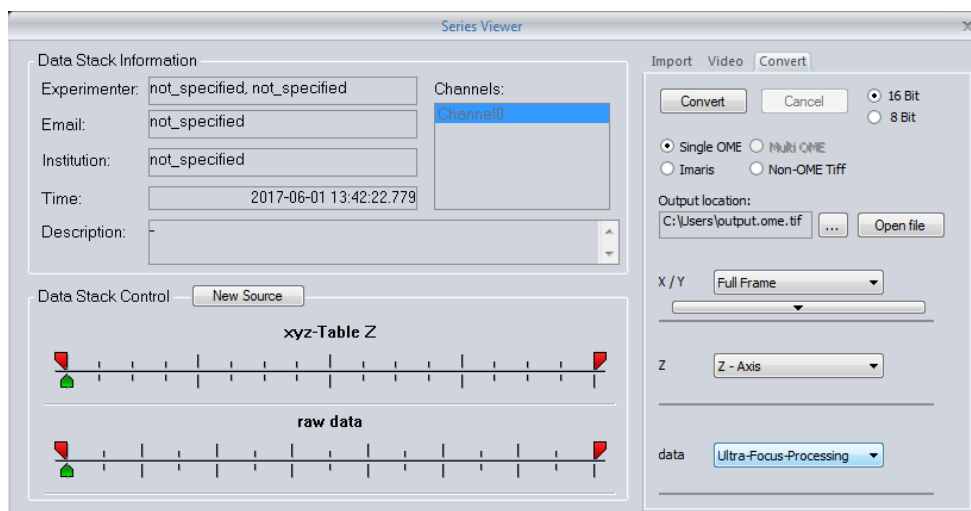
- Click in “Autosave Settings” on “Advanced settings”



- Activate in “Advanced Settings” the option “Save raw data if available”



- Confirm with clicking “OK”
- Set your imaging parameters including start position, end position and step size
- After imaging open acquired data via the Image Series Viewer



- Select the “Convert” tab
- For data select “Ultra-Focus-Processing”
- Select an output file directory under “Output location”
- Click on “Convert”

3. Imaris export via Image Series Viewer

Using the *Image Series Viewer*, it is now possible to export measurements directly to the Imaris-file format IMS.

How to use dynamic raw data processing via Image Series Viewer

- Open your UltraMicroscope TIFF.OME data via the Image Series Viewer
- Select the “Convert” tab.
- Click on “Imaris”
- Select an output file directory under “Output location”
- Click on “Convert”

